

## IP44.de controller

### instructions for use

1. Ensure that the IP44.de connect luminaires have been connected correctly with the corresponding connect components according to the IP44.de connect instructions for use.
2. Check mains connection, if disconnected.
3. Install the IP44.de controller as shown in figures below.
4. Provide the electrical connection.
5. Please see the configuration of the controller from the enclosed Short User Guide to the Casambi-App. With questions concerning the App, please directly contact the company Casambi via support@casambi.com.

### requirements for installation:

Max. output power: **150 W**

In- and output voltage: 230 V.

Transmission range 30 m (free area).

### information:

The aboveground installed cables comply with H05RN-F3G0,75 and H07RN-F3G1,5.

### assembly instruction:

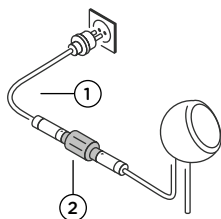
The IP44.de connect components may not come into contact with highly acidic or alkaline soils, or with other aggressive substances, chemicals or fertilizers.

The IP44.de connect components may only be positioned horizontally on non-compressed underground.

**NEVER** connect two controllers one after another, the controllers will be destroyed irreparably!!!! - see fig. 5 + 6

### configurations . do's + don'ts

fig. 1



- 1 mains connection port
- 2 controller
- 3 extension cable
- 4 Y-junction box
- 5 Y-junction box

fig. 2

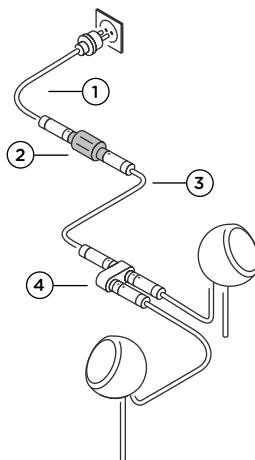


fig. 3

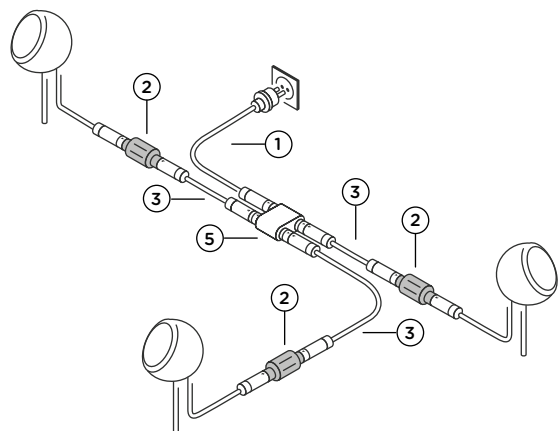


fig. 4

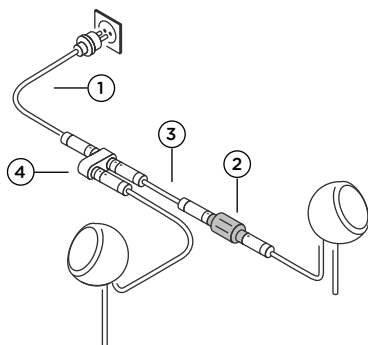
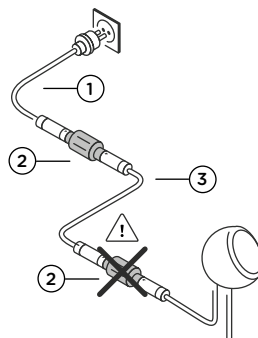


fig. 5



**NEVER** connect two controllers one after another, the controllers will be destroyed irreparably!

fig. 6

