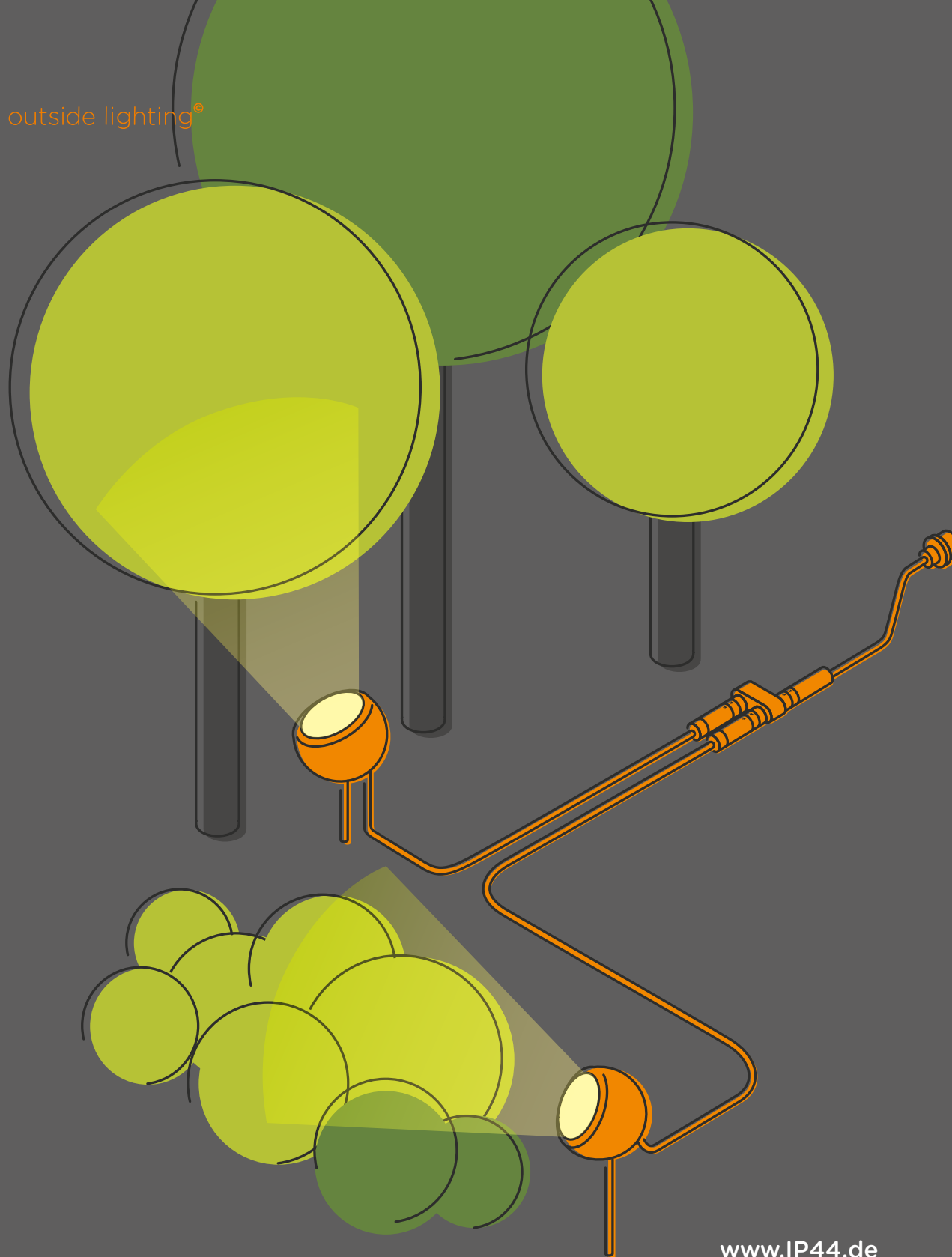


IP44.DE outside lighting®



www.IP44.de

Short User Guide

Casambi App for IP44.de connect

CASAMBI

www.casambi.com • support@casambi.com

Version 1.2.6 • 13.7.2017 • © Casambi Technologies Oy

First time use

Casambi app is easy to use. Follow these simple steps.

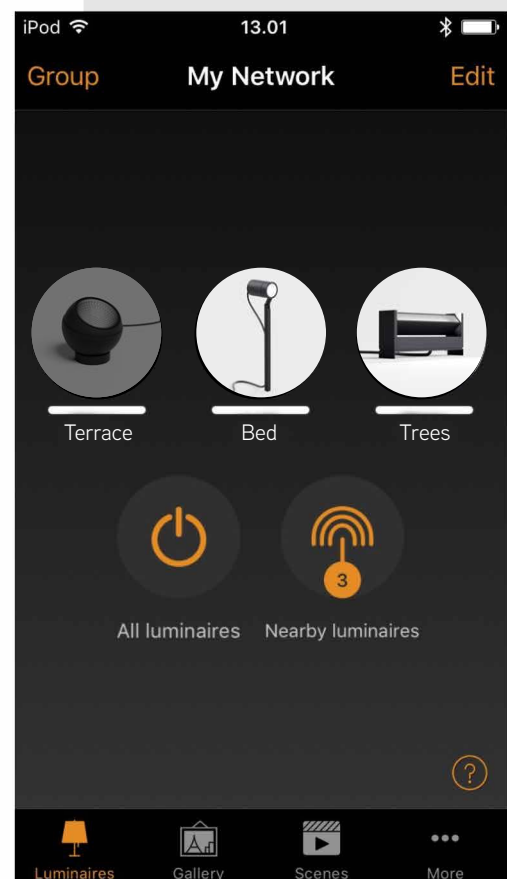
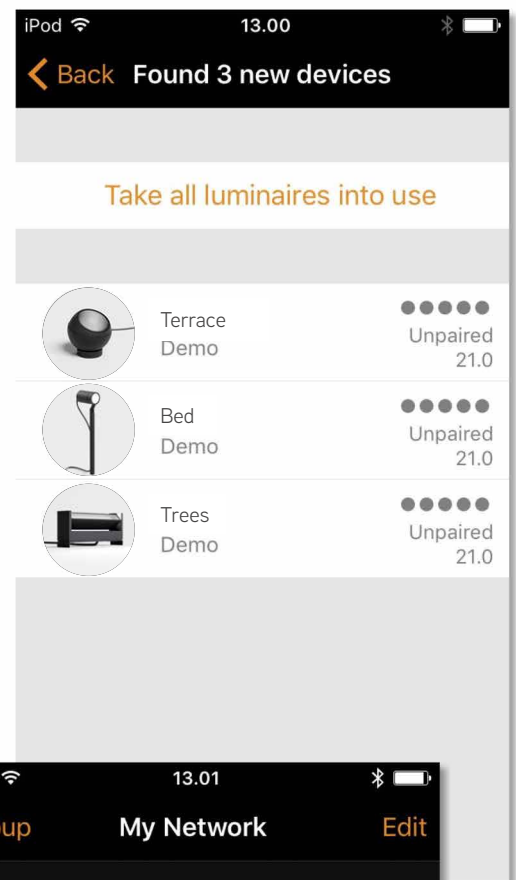
1. Download the app from Apple App Store or Google Play Store.
2. Turn on your Casambi enabled luminaires.
3. Open the app.
4. Casambi app will automatically find all Casambi enabled luminaires that are switched on.
5. Tap on the 'Take all luminaires into use'
6. Casambi app will automatically add all luminaires to one network and open the 'Luminaires' tab

Tip: If you want to allow other users to use your luminaires, please see the Networks and Sharing section later in this document

Basic gestures

Here are the basic gestures how to control your light.

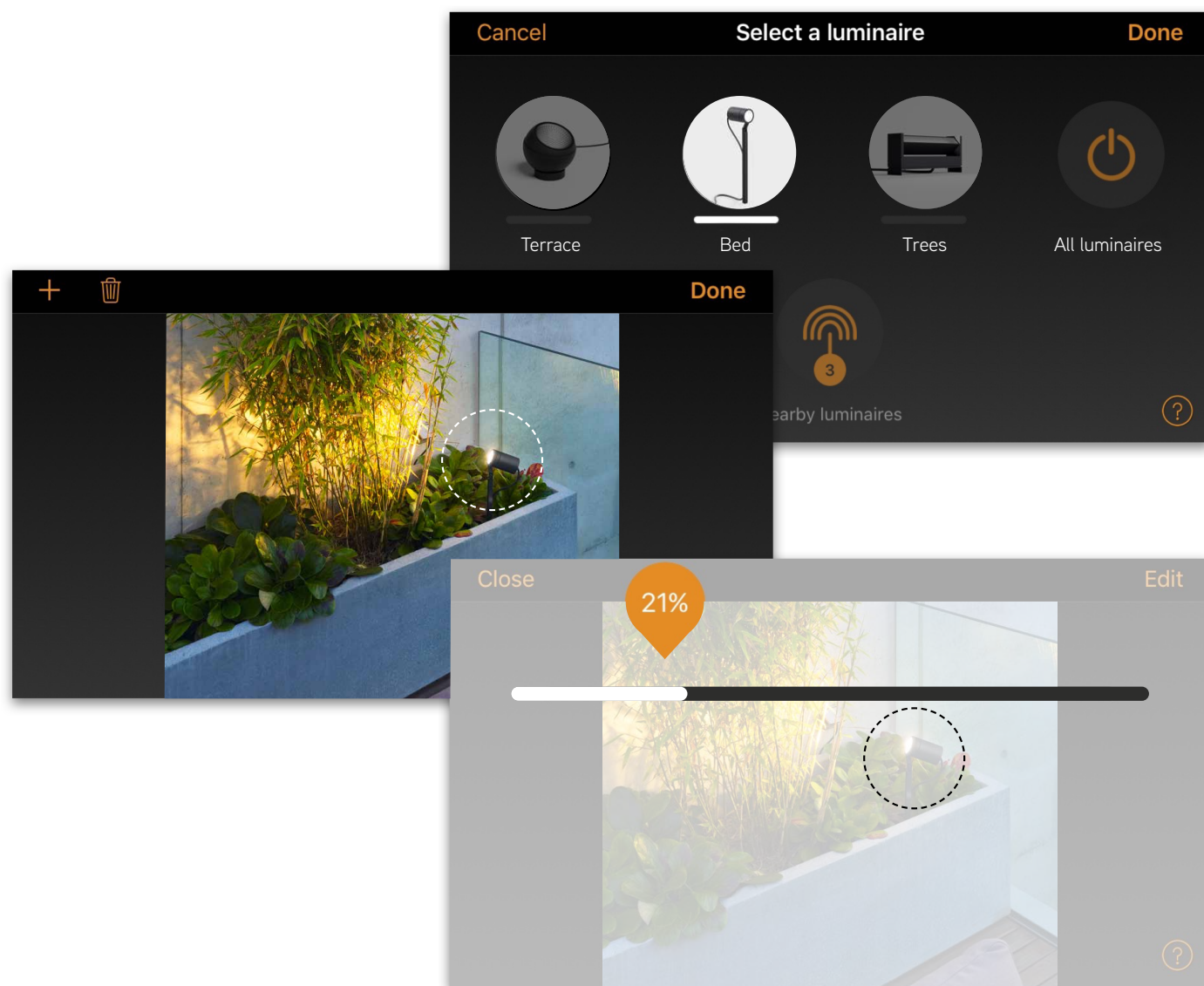
- To turn off or on your luminaire just tap on the luminaire control.
- Pan luminaire control left or right to adjust light level of the luminaire.
- Pan luminaire control up or down to adjust the colour temperature of the luminaire.
- Hold on top of the luminaire control to change the colour and save colours to palette or to open multiple dim sliders.



Gallery

The Gallery in Casambi app is the most natural way of controlling your luminaires. Take a picture of the place where your luminaires are, and place luminaire controls over them in the picture. You can also take a panorama picture to have more luminaires in one photo.

1. Add a photo of your room to Casambi Gallery by tapping 'Edit' and after that the '+' sign.
2. After you have added a photo you can add luminaire controls to the picture. Tap on the '+' sign, select a luminaire control that you want to add to the picture and tap 'Done'.
3. After you have added controls over all the luminaires in the picture tap 'Done'.
4. Now you can control your luminaires visually from the picture. No need to guess which luminaire is which.



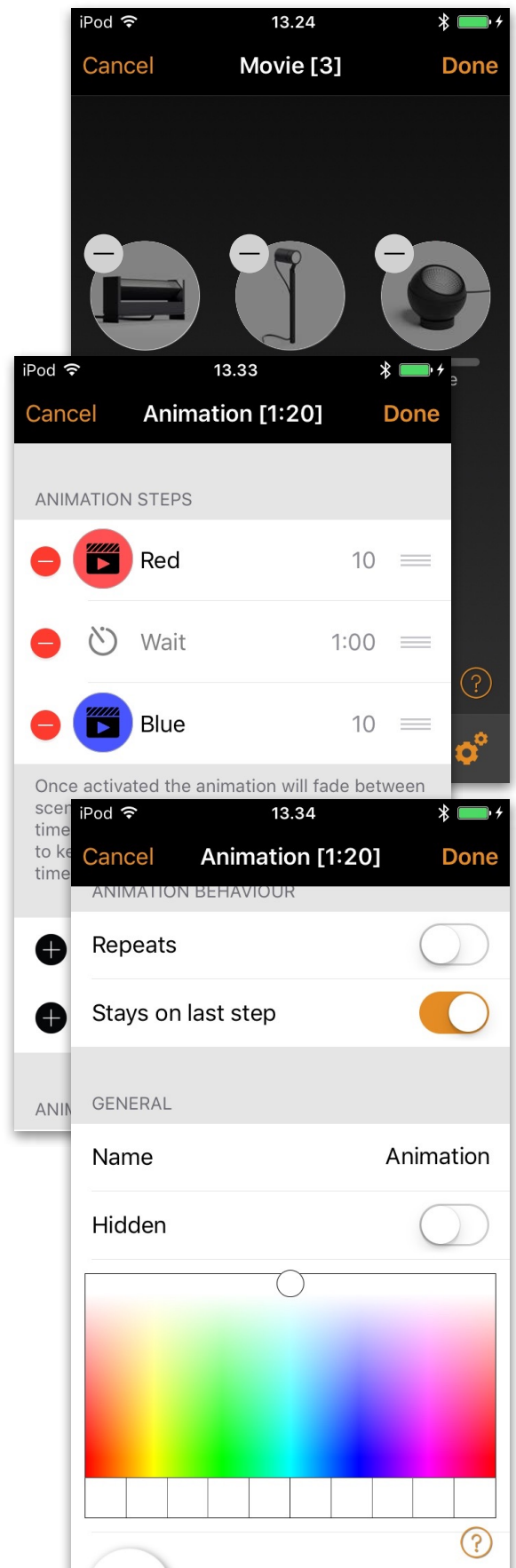
Scenes and animations

In the 'Scenes' tab you can create different lightings for different occasions. It is possible to control multiple luminaires with one tap to create perfect ambience. One luminaire can be used in several scenes.

1. Tap on 'Add scene' and enter a name for the scene. Select the 'Add scene' option
2. Select one or multiple luminaire controls and adjust the luminaires for the scene. You can adjust the luminaires separately or if you want to have same dim level or colour for all you can use the 'Luminaires in scene' control to adjust all luminaires in the scene.
3. When you are done editing the scene tap on 'Done'.
4. If you would like to create more scenes tap on the 'Edit' on top right corner and then tap on the '+' sign.

In the 'Scenes' tab it is also possible to create animations. Animations or dynamic scenes are special scene type that fade from scene to scene. They can be used like ordinary scenes. Animations can also repeat.

1. Tap on the 'Edit' on top right corner and then tap on the '+' sign.
2. Enter a name and tap on the 'Add an animation' option
3. Add animation steps. You can add scenes and wait times to animation. Example:
 - Add Scene Red, fade time 10 sec
 - Add wait 1 min
 - Add Scene Blue, fade time 10 sec
4. In General settings you can set the animation to repeat and select if it will stay at last level when animation ends.
5. When you are done editing the animation tap on 'Done'.



Timer

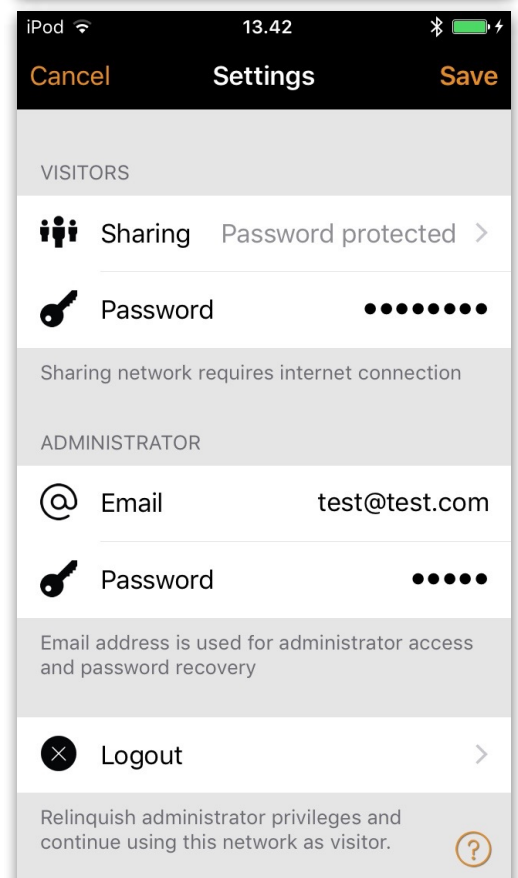
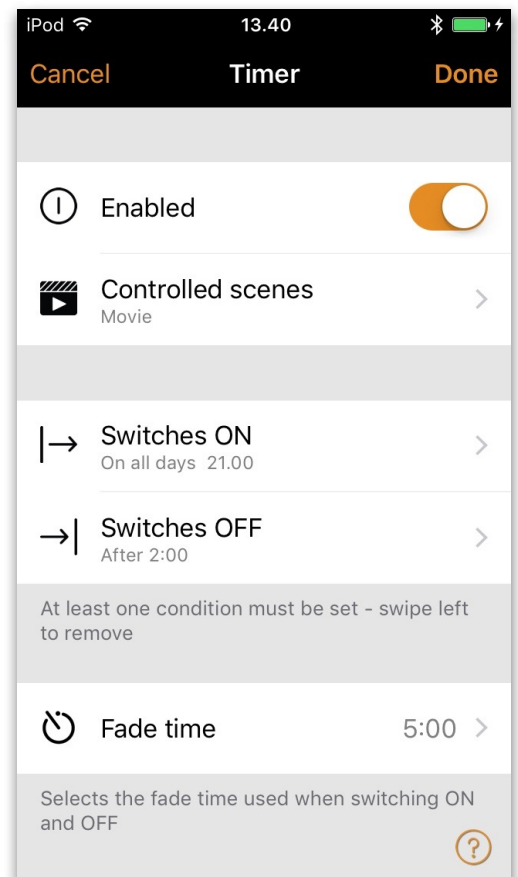
With timer function you can create a list of timers that will turn scenes or animations on and off based on time.

1. Go to More tab and select Timers. Create a new timer by tapping the 'Add a timer'
2. Tap on the 'Controlled scenes' and select a scene or animation that this timer will control
3. Tap on the 'Switches ON' button to set the time when the scene should turn on and tap on the 'Switches OFF' button to set the time when the scene should turn off.
4. It is also possible to set a fade time for the timer so that the scene will come on smoothly.
5. When you are done editing the timer tap on 'Done'.

Networks and Sharing

If you want to control your luminaires from more than one mobile device you need to change the network sharing settings. As a default the created network is not shared and only stored in the device that created it.

1. Go to 'More' tab and select 'Network setup' and 'Sharing settings'.
2. Tap on the Sharing and the 'Sharing mode' screen will open.
3. There are four different sharing modes: Not Shared, Administrator only, Password protected and Open. When you select Administrator only, Password protected or Open mode the network will be uploaded to cloud server and then it can be accessed also from other mobile devices.
4. Add an email address and a password for the network. Email address is needed for remote access and password recovery.
5. Confirm your settings with 'Save'.



Unpairing a luminaire

You may need to remove a luminaire from a network if you want to add it to another network. Casambi enabled luminaires can only be in one network at a time.

If Casambi app does not find Casambi enabled luminaire after powering the luminaire, it might be that it is paired to a network that the mobile device in use does not have access to. In this case the luminaire needs to be unpaired before it is possible to control the luminaire.

To unpair a luminaire go to the 'Nearby devices' screen found under 'More' tab in the Casambi app. Tap on the luminaire you want to unpair and select 'Unpair device'. This will unpair the luminaire if you have modification rights to the network.

If you don't have the modification rights to the network that the luminaire is paired to then you need to have access to the luminaire's power switch to unpair it. Tap on the 'Unpair device' and the app will open an 'Unpair' screen. Tap on the 'Start' button and the time bar appears. Now quickly flick the power switch OFF and back ON to unpair the luminaire. If unpairing succeeded

