

## IP44.de controller

### instructions for use

1. Ensure that the IP44.de connect luminaires have been connected correctly with the corresponding connect components according to the IP44.de connect instructions for use.
2. Check mains connection, if disconnected.
3. Install the IP44.de controller as shown in figures below. For optimal reception the IP44.de controller has to be positioned as follows: when using one single controller (fig. 1/2/4), the IP44.de logo imprint has to show in direction of the sender (fig. 7). When using several controllers (fig. 3) the IP44.de logos ideally should face each other in a 45°-angle (fig. 8). (Reason is that the receiving antenna is located directly below the logo).
4. Provide the electrical connection.
5. Please see the configuration of the controller from the enclosed Short User Guide to the Casambi-App. With questions concerning the App, please directly contact the company Casambi via [support@casambi.com](mailto:support@casambi.com).

### requirements for installation:

Max. output power: **150 W**

In- and output voltage: 230 V.

Transmission range 30 m (free area).

### information:

The aboveground installed cables comply with H05RN-F3G0,75 and H07RN-F3G1,5.

### assembly instruction:

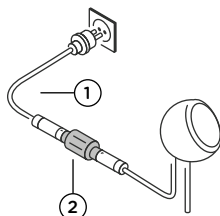
The IP44.de connect components may not come into contact with highly acidic or alkaline soils, or with other aggressive substances, chemicals or fertilizers.

The IP44.de connect components may only be positioned horizontally on non-compressed underground.

NEVER connect two controllers one after another, the **controllers will be destroyed irreparably!!!!** – see fig. 5 + 6

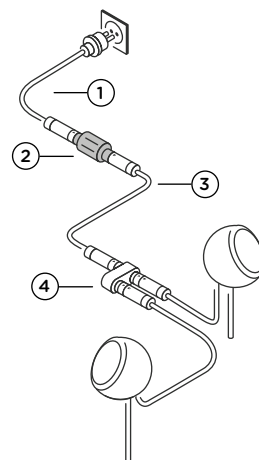
### configurations . do's + don'ts

fig. 1



- 1 mains connection port
- 2 controller
- 3 extension cable
- 4 Y-junction box
- 5 Y-junction box

fig. 2



## configurations . do's + don'ts

- 1 mains connection port
- 2 controller
- 3 extension cable
- 4 Y-junction box
- 5 Y-junction box

fig. 3

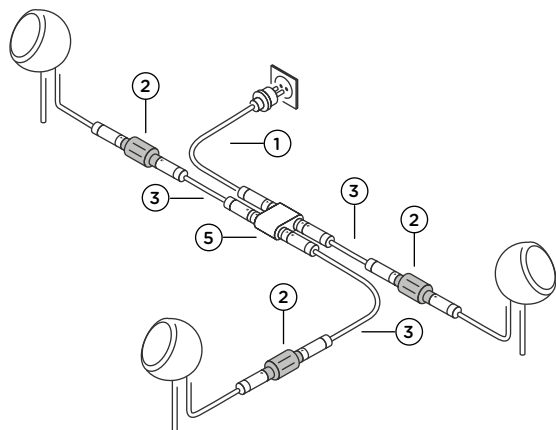


fig. 4

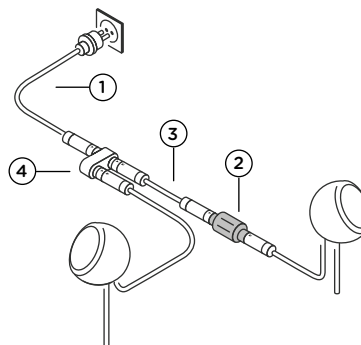
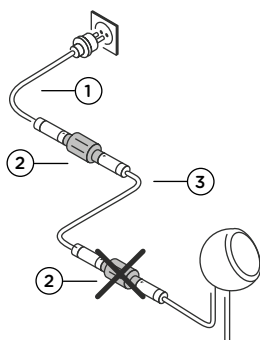


fig. 5



**NEVER connect two controllers one after another, the controllers will be destroyed irreparably!**

fig. 6

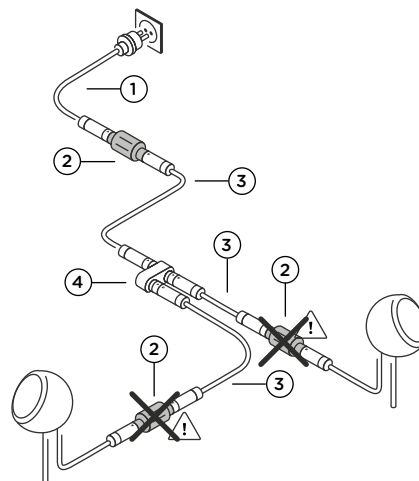


fig. 7

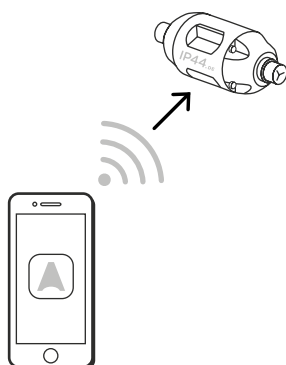


fig. 8

